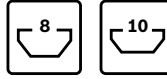
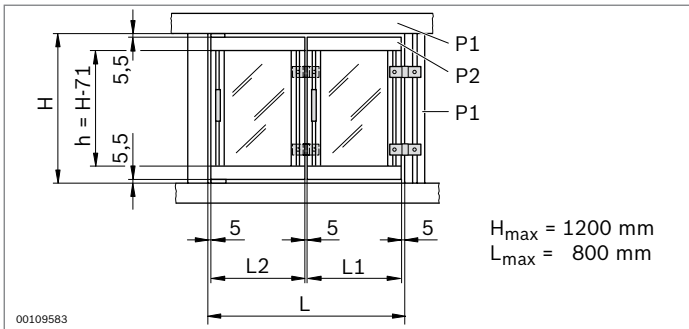


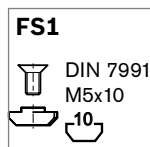
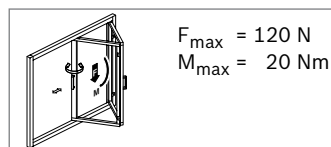
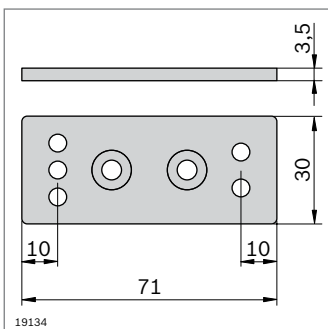
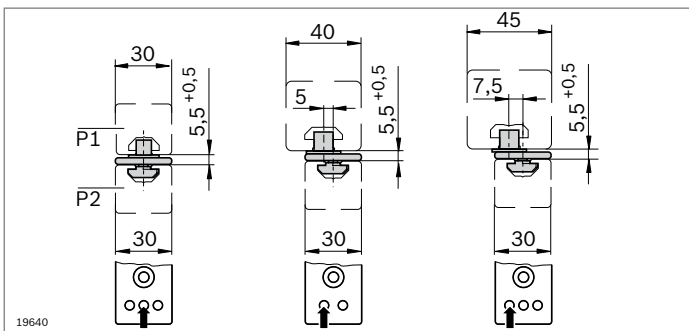
Folding door element



- ▶ For a simultaneous swinging and sliding motion for making folding doors out of 30 mm profiles
- ▶ Extremely long service life (approx. 50,000 actuations)
- ▶ Suitable for frames made of profiles with 8 mm and 10 mm slot
- ▶ Frame and door profile are always flush (guide ring position depends on the thickness of the frame profile)



P2 (mm)	P1 (mm)	L1 (mm)	L2 (mm)
30X30	45x45	0.5L - 29.5	0.5L + 14.5
	40x40	0.5L - 28.3	0.5L + 13.3
	30x30	0.5L - 25.8	0.5L + 10.8



Folding door element	No.	FS
	3 842 516 715	2xFS1

Material: Folding door element: diecast zinc
 Guide ring: PA; black
 Fastening material: steel; galvanized

Scope of delivery: incl. fastening material (FS)